

Baltimore County BRAC Update

Infrastructure Ready



- Baltimore County well-positioned for BRAC
 - Immediately available sites
 - Strategic location between APG and Fort Meade
 - Ample services: transportation, water, sewer, utilities, redundant communications systems
 - Wide variety of business communities, from private, secure settings to amenities of town center

White Marsh

- Designated growth area
- 2,000-acres on I-95
- 4 million s.f. business development
- 25 minute drive to APG
- COPT
 - Developing new growth opportunities for business and industry
 - Exploring increased density and mixed use



Middle River

- MD43 -- opened October 2006
 - Access to 1,000 acres
 - Direct connection to Chesapeake Bay waterfront communities
- Baltimore Crossroads
 - 5,000,000 square feet of flex/office, office, R&D, warehouse and industrial planned
 - Utilities in place, state-of-the-art telecommunications
- Over 1,000,000 s.f. already constructed



Future Opportunities

■ Pulaski Highway Study

- OEA grant to study large inventory of underutilized land
- Will identify “nodes” for higher-density mixed-use and office development
- RFP October 2008



■ Middle River Station

- Former GSA Depot
- 2 million s.f.
- Owners exploring major mixed-use development

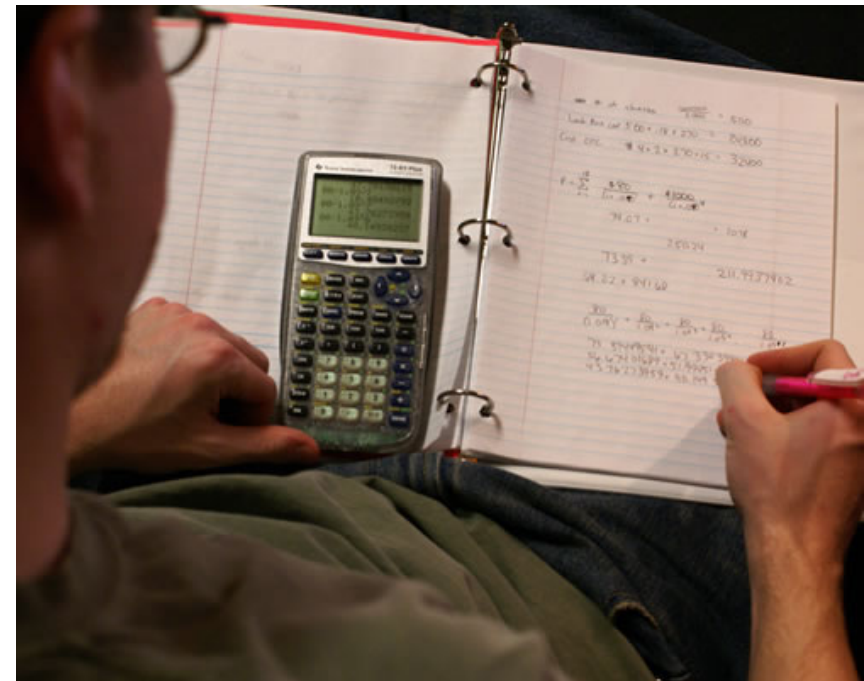
Schools Update

- New Vincent Farm Elementary
 - Opened August 2008
 - Can be expanded for BRAC
- Chesapeake H.S. STEM Academy
 - Reorganized course offerings in science, technology, engineering
- Project Lead the Way pre-engineering program to be implemented in 10 schools next year
- Homeland Security program Dundalk H.S.



Higher Education

- New OEA-funded regional coordination effort initiated by HCC and CCBC
 - Short- and long-term plans for both incoming college bound students and new APG and Fort Meade workers
- CCBC organized new statewide consortium to improve and align construction education and training
- Working to enhance engineering technology programs



Workforce Development



- BRAC Project Coordinator for Workforce & Training for Baltimore City and Baltimore County in place
- Ongoing regional cooperation to serve BRAC businesses and workers
- Three winners from the Baltimore Region in the second round of DLLR's Workforce ONE grant awards:
 - Towson University: \$100,000 to design and implement elementary engineering program for HCPS
 - \$100,000 grants Associated Builders and Contractors to provide training to minority-owned businesses related to BRAC opportunities
 - Baltimore City Community College received \$93,634 to create a new Center for Construction Technologies.

■ Other News

- Fort Monmouth Relocation Fair – October 22-23
- Baltimore County neighborhood tour for Fort and contractor employees being planned for early next spring